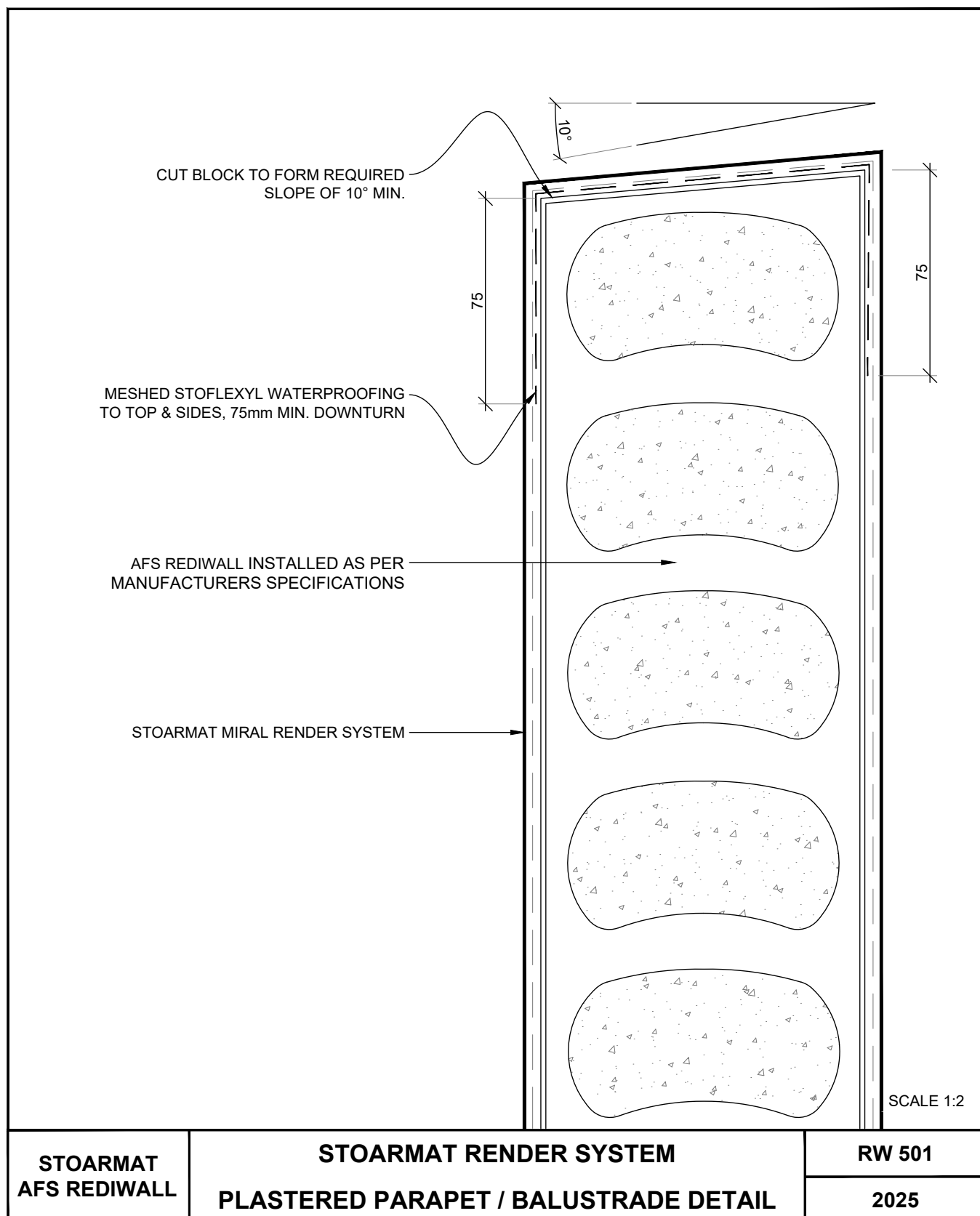
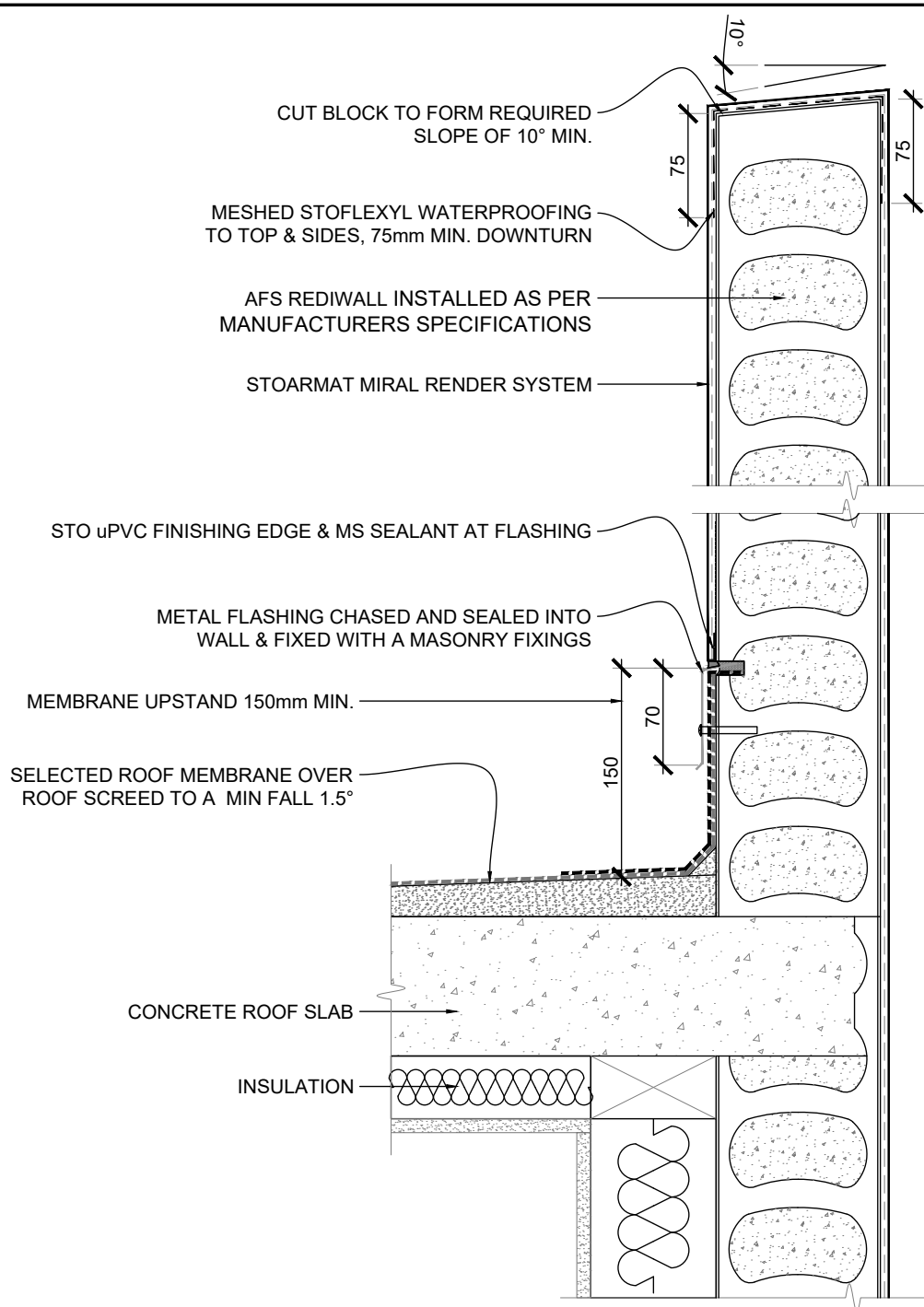


STOARMAT AFS REDIWALL	STOARMAT RENDER SYSTEM PARAPET / METAL FLASHING DETAIL	RW 500
		2025

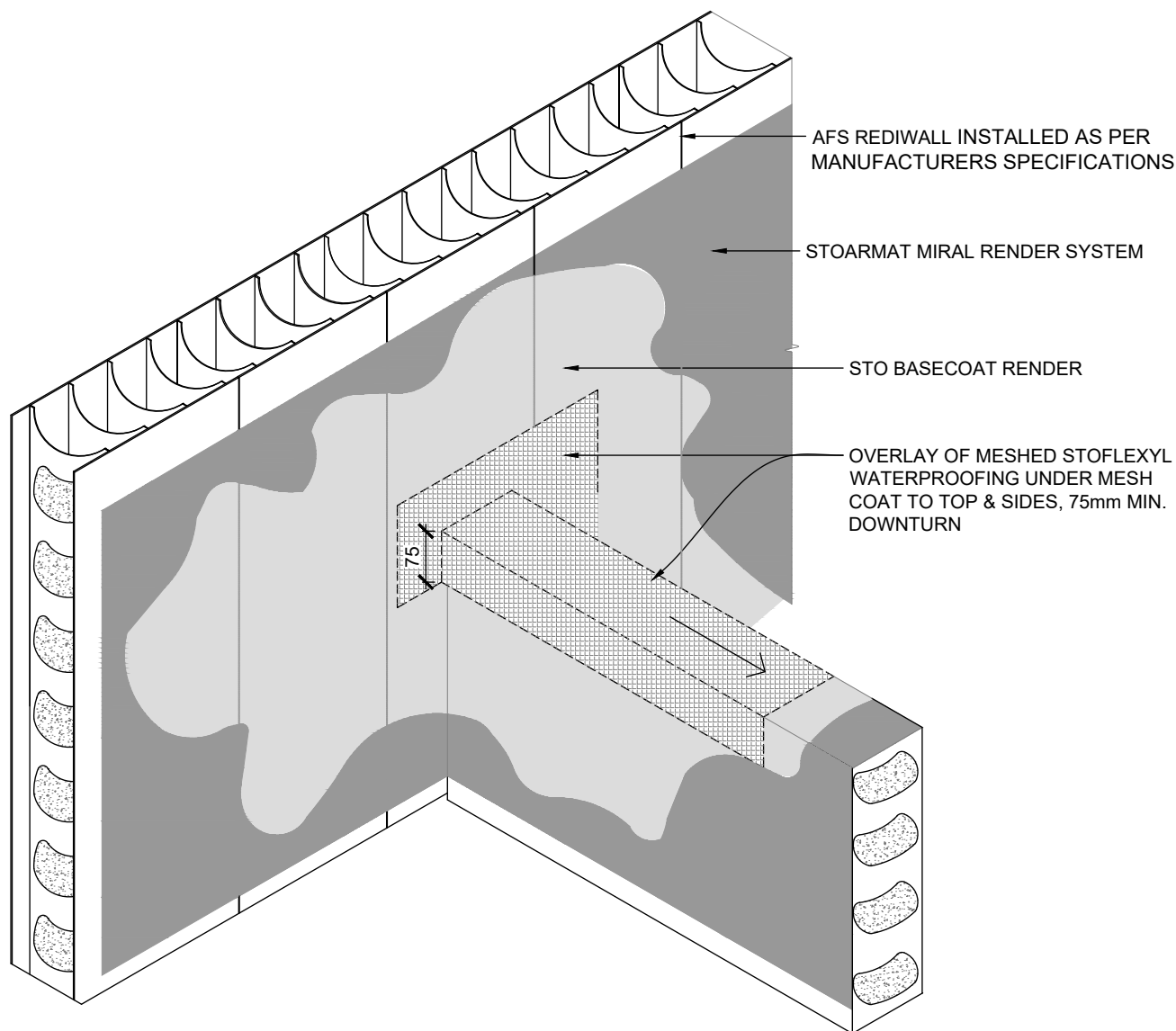




SCALE 1:5

STOARMAT AFS REDIWALL	STOARMAT RENDER SYSTEM PARAPET ROOF WALL MEMBRANE DETAIL	RW 502
		2025

The information contained on this page is based on our experience and research at the date of issue. The detail is for use by Registered Architects, Licensed Designers or Chartered Engineers to assist in developing project details using Sto Systems. Stoanz Ltd reserve the right to alter or update information at any time without prior notice and it is the responsibility of the designer, project manager or Sto contractor to ensure they have and use the current Sto details and specifications on site.



NOTE:

1. ALL ADJACENT WALLS ARE TO BE STRUCTURALLY TIED WITH STEEL REINFORCEMENT.
2. BALUSTRADES TO HAVE 10° MIN. FALL TO TOP
3. ALL BALUSTRADES, PARAPETS & WALL CAPS TO HAVE MESHED STOFLEXYL WATERPROOFING
4. MESHED STOFLEXYL WATERPROOFING MEMBRANE HAS BEEN TESTED BY BRANZ TO AS/NZS 4858

SCALE 1:10

STOARMAT AFS REDIWALL	STOARMAT RENDER SYSTEM STOFLEXYL WATERPROOFING MEMBRANE	RW 503
		2025

The information contained on this page is based on our experience and research at the date of issue. The detail is for use by Registered Architects, Licensed Designers or Chartered Engineers to assist in developing project details using Sto Systems. Stoanz Ltd reserve the right to alter or update information at any time without prior notice and it is the responsibility of the designer, project manager or Sto contractor to ensure they have and use the current Sto details and specifications on site.